

Student Name: _____

Test ID: 20014158

Student

Description: 1920 Algebra I EOC Prep Touchstone Part

Instructions:

1 No Calcu

1. What is the solution of the equation $4(x + 4) - 1 = 3(x + 4) + 18$

- A. $x = 15$
- B. $x = 19$
- C. $x = 25$
- D. $x = 45$

2. The following represents a system of equations.

$$\begin{aligned}2x + 5y &= 2 \\ y &= 2x + 10\end{aligned}$$

What is the solution to the system of equations?

- A. $(1, 0)$
- B. $(-3, 4)$
- C. $(-4, 2)$
- D. $(6, -2)$

3. What are the zeros of the equation $x^2 + 9x + 18 = 0$?

- A. $x = 3$ and $x = 6$
- B. $x = -3$ and $x = -6$
- C. $x = 9$ and $x = 2$
- D. $x = -9$ and $x = -2$

4. Which sum is rational?

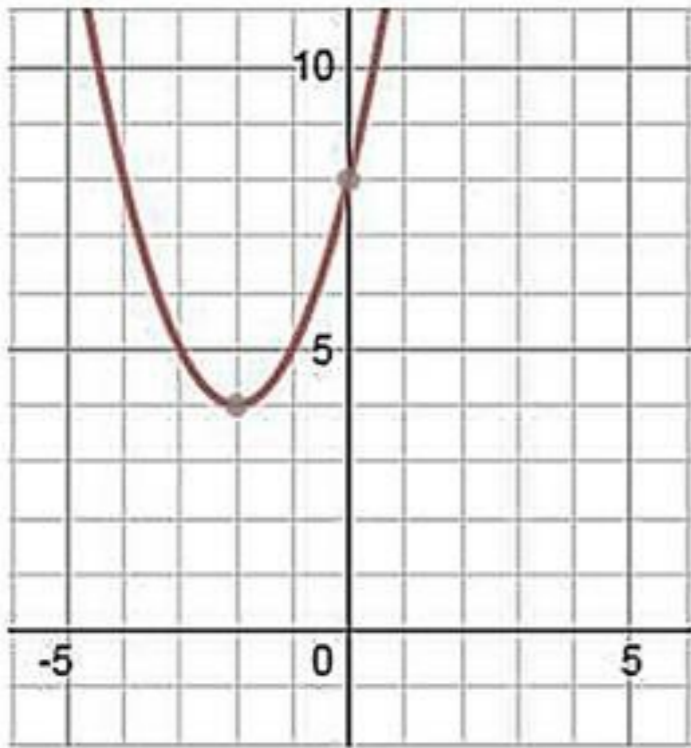
- A. $\pi + 18$
- B. $\pi + \sqrt{2}$
- C. $\sqrt{3} + 5.5$
- D. $\sqrt{25} + 1.75$

5.

Find the sum of $\sqrt{32}$ and $\sqrt{8}$.

- A. $2\sqrt{10}$
- B. $6\sqrt{2}$
- C. 12
- D. $20\sqrt{2}$

6. Consider the following graph:



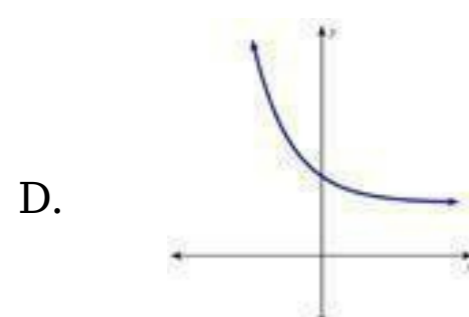
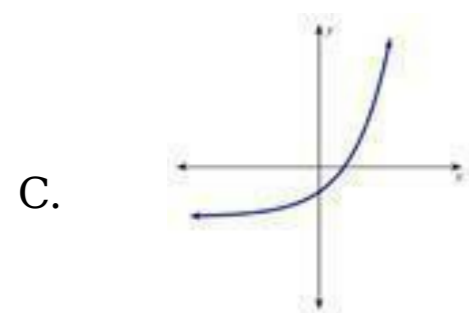
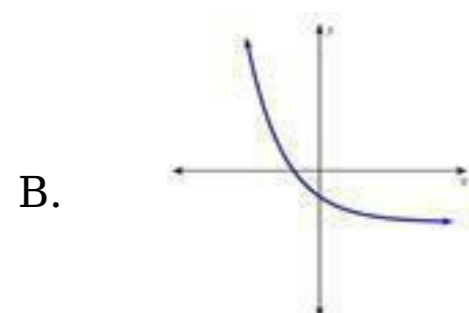
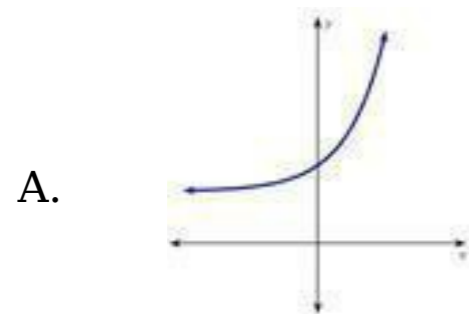
Which function is represented by the graph?

- A. $y = x^2 + 4$
- B. $y = (x - 2)^2 + 4$
- C. $y = (x + 2)^2 + 4$
- D. $y = (x + 4)^2 + 2$

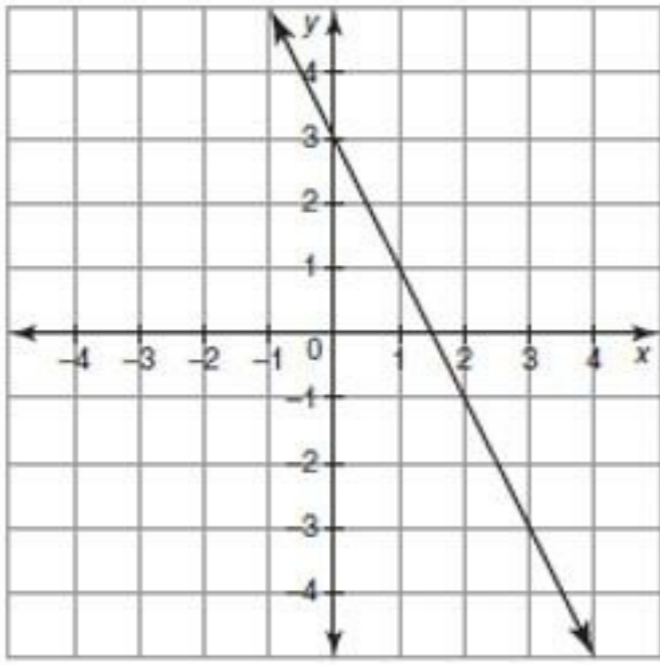
7. What is the value of the function $f(x) = 2x^2 - 3x + 1$ evaluated at $x = 2$?

- A. 0
- B. 3
- C. 6
- D. 11

8. Which of the following could be the graph of $f(x) = 2^x - 1$?



9. Which of the following equations represents the graph?



Write an equation for the graph.

- A. $y = 2x + 3$
 - B. $y = \frac{1}{2}x + 3$
 - C. $y = -2x + 3$
 - D. $y = -\frac{1}{2}x + 3$
10. Which of the following statements shows causation?
- A. An increase in rain fall and an increase in movie ticket sales.
 - B. An increase in a child's weight and an increase in hours spent playing video games.
 - C. An increase in monthly payments made on a loan and a decrease in the balance of the loan.
 - D. A decrease in temperature and an increase in hot chocolate sales.